

Beech House, Bell Lane, Thelwall, Warrington WA4 2SY

Offers Over £1,250,000

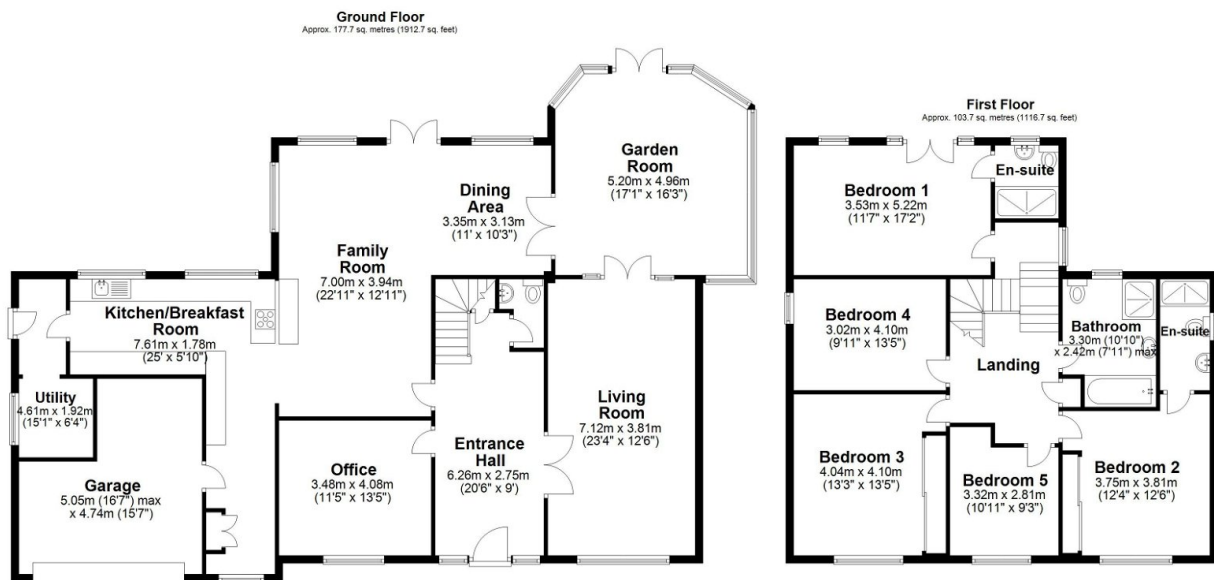
🛏 5 🍷 3 🛋 4



Beech House is a beautiful residence of approximately 3,000 sq ft and is set within a private and gated generous sized plot with the benefit of a spacious driveway providing plentiful off-road parking, garage and fabulous gardens surrounding. Offering spacious, versatile living accommodation internal viewings are strongly recommended to appreciate all that this well maintained and beautifully presented home has to offer.

Key Features

- Five bedroom detached property
- Exceptional presentation throughout
- Kitchen/breakfast room with integrated appliances
- Master bedroom with Juliette balcony and en suite plus guest bedroom with en suite shower room
- Close to Lymm, Thelwall and Stockton Heath villages
- Accommodation extending to approx 3,000 sq ft
- Fabulous sized plot with private gardens and gated entrances
- Family Room opening to dining area and garden room
- Easy commuting distance to major motorway networks
- Internal viewings strongly recommended to appreciate all that this property has to offer. Motivated vendor



Total area: approx. 281.4 sq. metres (3029.4 sq. feet)
Measurements of rooms and any other items are approximate and no responsibility is taken for any misstatement. This plan is for illustrative purposes only and should be used as such. Produced by Openright.co.uk
Plan produced using Planitup